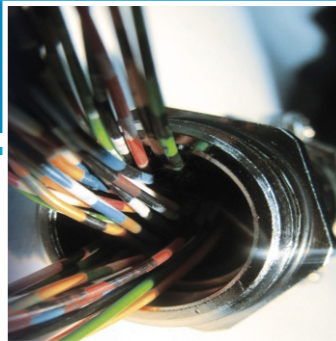
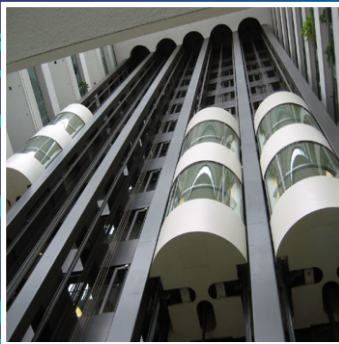




# UMESH CABLE<sup>®</sup>



Traveling Cables For Elevators  
Automation & Crane Cables  
Submersible Pump Cables  
Single & Multicore Cables

[www.umeshcable.com](http://www.umeshcable.com)

## About us

Since 1982 our company initiated manufacturing wires & cables with a motive of developing innovative products in the field of Cable Industry in India. In our professional run, we executed the order requirements of our valued customers with implementation of innovative solutions.

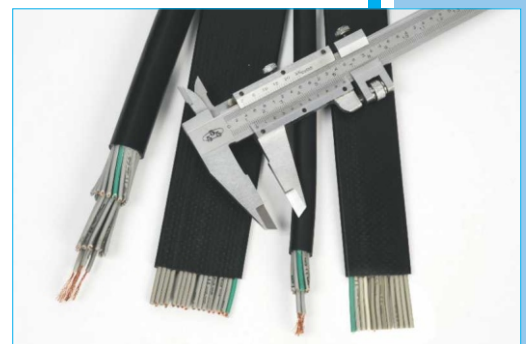
We have vast experience in manufacturing of "Traveling Cables (for elevators), Automation & Crane Cables, Submersible Pump Cables & Single/Multi core Cables". Our qualified workmen are capable to shape any type/variety of flexible cables.



## Vision & Mission

We always strive to produce best quality with utmost care in the process of manufacturing under anticipation of customer's complete satisfaction.

Our mission is to maintain the principles of integrity, honesty & quality in whatever we deliver. We believe in our constant hard efforts which only awards prosperity to our valued customers & business associates.



## Quality Control

Our advanced manufacturing technology delivers the product with optimum quality with minimum wastages so as to be cost effective & efficient manufacturing processes. Our product undergoes stringent quality tests and at least fulfills IS : 694 standards & ISO 9001 : 2015 quality management standard.

## Traveling Cable For Elevators

### Product Application :

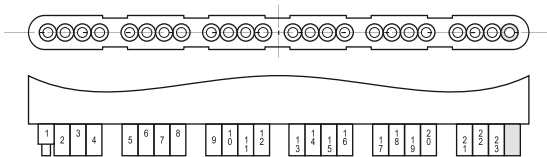
Elevator suspended traveling cable for internal & panoramic elevators moving in vertical direction.

### Voltage Rating :

The product is fit for voltage up to 1100 V.

### Working Temperature :

Under normal conditions, working temperature ranges from 0°C to 70°C.



Specification	Core Insulation	Sheath Insulation	Max. conductor resistance ohm/km at 20°C	Max. Ampere Rating
4C x 0.50 mm <sup>2</sup>	PVC	PVC/TPR	39	4
4C x 0.75 mm <sup>2</sup>	PVC	PVC/TPR	26	7
12C x 0.50 mm <sup>2</sup>	PVC	PVC/TPR	39	4
12C x 0.75 mm <sup>2</sup>	PVC	PVC/TPR	26	7
16C x 0.50 mm <sup>2</sup>	PVC	PVC/TPR	39	4
16C x 0.75 mm <sup>2</sup>	PVC	PVC/TPR	26	7
24C x 0.50 mm <sup>2</sup>	PVC	PVC/TPR	39	4
24C x 0.75 mm <sup>2</sup>	PVC	PVC/TPR	26	7

C-Number of core, PVC-Polyvinylchloride, TPR-Thermo Plastic Rubber

### Also Available in number of core :

2,4,6,8,10,12,16,18,20,24,30.

### Packing :

In wooden Drum format of 250, 500 & 1000 meters or on request.

### Technical support :

- For different number of cores or cross-sections, traveling cable with strain bearing members for higher elevated lengths.
- Traveling cable with data elements, lift speed more than 1 m/s.

## Display Round Cable / Telephone Cable

### Product Specification :

7 / 38 x 12 Core Round Cable  
14 / 38 x 12 Core Round Cable

### Product Application :

Applicable for signalling Purpose,  
COP / LOP Purpose.



## Display Flat Cable / Ribbon Cable

### Product Specification :

7 / 38 x 12 Flat Round Cable ( Tinned Copper)  
14 / 38 x 12 Flat Round Cable (Tinned Copper)

### Product Application :

Applicable for Signalling Purpose,  
COP / LOP Purpose.



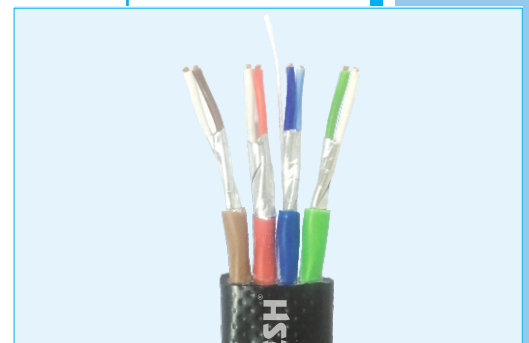
## CAT-6 IP Camera Flat Traveling Cable

### Product Specification :

0.50 Sq. mm x 2 x 4 twisted pair with  
shielding on each twisted Pair for  
Better quality in longer lengths.

### Product Application :

Suitable for IP cameras in lift & Other signalling based purpose.



## Twin Pair Screened Flat Cables

### Product Specification :

0.75 sq. mm. x 10 Cores + 2 x 2 x 0.50 sq. mm. shielded  
twisted pair.

### Product Application :

Serial Communication, Data transfer & Signalling purposes.



## Submersible Flat Cable

### Product Application :

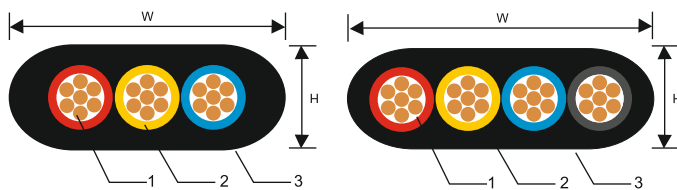
For general purpose pumps, submersible pumps, irrigation pumps, sewage treatment plants, sea water/river water handling equipment etc.

### Voltage Rating :

The product is fit for voltage up to 1100 V.

### Working Temperature :

Under normal conditions, working temperature ranges from 0°C to 70°C.



- (1) Electrolytic Copper Conductor
- (2) PVC Insulation of Cores (Red, Yellow, Blue, Black)
- (3) PVC Sheath (Black / Grey)

**3 Core Flat Cables as per IS : 694 with ISI mark**

Conductor Area sq.mm.	Insulation Thickness (Nom.) mm	Sheath Thickness (Nom.) mm	Overall dimension		Conductor Resistance @20°C (max) ohms/km	Current Carrying Capacity @40°C Amps
			Width (Approx.) 'W' mm	Height (Approx.) 'H' mm		
1.5	0.6	0.9	11.5	5.4	12.10	14
2.5	0.7	1.0	14.0	6.4	7.41	18
4.0	0.8	1.0	16.5	7.4	4.95	26
6.0	0.8	1.10	18.0	8.0	3.30	31
10.0	1.0	1.20	22.5	9.6	1.91	42
16.0	1.0	1.30	26.5	11.0	1.21	57
25.0	1.2	1.50	32.5	14.7	0.780	72
35.0	1.2	1.60	36.0	15.0	0.554	90
50.0	1.4	1.70	41.5	17.0	0.386	115
70.0	1.4	2.20	52.0	21.0	0.272	143
95.0	1.6	2.40	61.0	24.5	0.206	165



## Single Core & Multi Core Round Cables

### Product Application :

House Wires, Motor Cables, Plug-pin Cords, Panel Board Wiring, Hand Grinders & Cutter Cords, Automobile Wires etc.

### Voltage Rating :

The product is fit for voltage up to 1100 V.

### Working Temperature :

Under normal conditions, working temperature ranges from 0°C to 70°C.

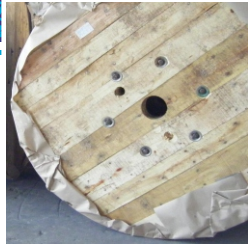


### "UMESH" PLAIN COPPER CONDUCTOR, PVC INSULATED UNSHEATHED UPTO 1100 V SINGLE CORE FLEXIBLE CABLES FOR PANEL BOARD WIRING AS PER IS : 694 WITH "ISI" MARK (UPTO 50 SQ. MM.)

Area Sq. mm	Cond. Dia. mm	Max Resistance ohm/km at 20° C	Insulation thickness mm Nominal	Cable Dia. (Appx.) mm	Current Rating AMP	Area Sq.mm	Cond. Dia. mm	Max D.C. Resistance ohm/km at 20°C	Insulation thickness mm Nominal	Cable Dia (Appx.) mm	Current Rating AMP
0.50	0.94	39.00	0.60	2.20	4	16.00	6.00	1.210	1.00	8.50	60
0.75	1.20	26.00	0.60	2.30	7	25.00	7.60	0.780	1.20	10.50	75
1.00	1.34	19.50	0.60	2.60	11	35.00	8.70	0.554	1.20	12.00	95
1.50	1.64	13.30	0.60	2.90	14	50.00	10.60	0.386	1.40	14.20	125
2.50	2.08	7.98	0.70	3.60	19	70.00	12.30	0.272	1.60	16.50	170
4.00	2.61	4.95	0.80	4.20	26	95.00	14.70	0.206	1.80	19.00	210
6.00	3.50	3.30	0.80	5.00	33	120.00	16.70	0.161	2.00	21.50	235
10.00	4.60	1.91	1.00	6.50	45	150.00	18.30	0.129	2.00	23.50	295

### "UMESH" PLAIN COPPER CONDUCTOR, PVC INSULATED AND SHEATHED UPTO 1100V MULTICORE FLEXIBLE CABLES AS PER IS : 694 WITH "ISI" MARK

Area Sq. mm	Cond. Dia. mm	Max Resistance Ohm/km at 20°C	Insulation thickness mm Nominal	Core Dia. mm	Sheath Thickness mm Nominal			Overall Diameter mm Approximate			Current Rating AMP
					2 Core	3 core	4 core	2 Core	3 core	4 core	
0.50	0.94	39.00	0.60	2.20	0.90	0.90	0.90	6.00	6.40	7.10	4
0.75	1.20	26.00	0.60	2.30	0.90	0.90	0.90	6.40	6.80	7.30	7
1.00	1.34	19.50	0.60	2.60	0.90	0.90	0.90	6.80	7.20	7.80	11
1.50	1.64	13.80	0.60	2.90	0.90	0.90	1.00	7.40	7.80	8.80	14
2.50	2.08	7.98	0.70	3.50	1.00	1.00	1.00	9.00	9.60	10.50	19
4.00	2.61	4.95	0.80	4.20	1.00	1.00	1.00	10.40	11.30	12.40	26
6.00	3.50	3.30	0.80	5.00	1.15	1.15	1.40	12.60	13.40	15.20	33
10.00	4.60	1.91	1.00	6.20	1.40	1.40	1.40	16.00	17.00	18.80	45
16.00	6.00	1.21	1.00	8.00	1.40	1.40	1.40	19.00	20.00	22.50	60
25.00	7.60	0.78	1.20	10.0	1.40	1.40	1.60	23.00	24.50	27.50	75
35.00	8.70	0.55	1.20	11.0	1.50	1.50	1.70	25.50	27.50	30.50	95
50.00	12.30	0.38	1.40	13.0	1.60	1.60	1.80	29.50	31.50	35.00	125



# UMESH CABLE<sup>®</sup>

Plot No. 5211, Phase-4, Vatva G.I.D.C.,  
Nr. Ramol Police Chowky, Ahmedabad-382445. Gujarat, India.  
Phone : +91 - 79 - 29702211  
E-mail : [info@umeshcable.com](mailto:info@umeshcable.com) • [sales@umeshcable.com](mailto:sales@umeshcable.com)  
website : [www.umeshcable.com](http://www.umeshcable.com) • skype : umeshcable

*Dealer's Stamp*